

# Jerry Helms Bridge Festival

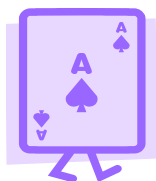
On St. Simons in the Spring!



*"Practical Problems and Solutions"*

(Including a little emphasis on slam bidding)

**Wednesday, April 29th, and Thursday, April 30th, 2020**



10:00 a.m. to 3:30 p.m.  
Marsh's Edge Retirement Community  
136 Marsh's Edge Lane  
St. Simons Island, Georgia 31522



A registration fee of \$220 (\$240 after March 14th) includes four sessions of bridge instruction by Jerry Helms, "Ask Jerry" Q&A time, a booklet written by Jerry, two buffet lunches, plus a wine and cheese party following Wednesday's session.

**For further information, contact  
Ken Trobaugh: ktrobaugh@comcast.net, 912-638-2142**

**Discounted lodging for this seminar has been arranged at the following  
hotels, "subject to availability." Please reserve early.**

Holiday Inn Express, \$122  
299 Main Street, St. Simons, 912-634-2175

Home2Suites by Hilton, \$169  
105 Terminal Way, St. Simons, 912-638-0333

**SPECIAL NOVICE/REFRESHER SEMINAR**  
On Tuesday, April 28th, Jerry is offering a special morning seminar at the nearby Golden Isles Duplicate Bridge Club.  
**REQUEST SEPARATE REGISTRATION FORM.**

[www.jerryhelms.com](http://www.jerryhelms.com)   [www.marshs-edge.com](http://www.marshs-edge.com)   [www.home2suites.com](http://www.home2suites.com)   [www.hiexpress.com](http://www.hiexpress.com)

**Please make your check payable to Ken Trobaugh for \$220 (\$240 after March 14th),  
and mail with the bottom portion of this form to him at 100 Rosemont Street,  
St. Simons Island, GA 31522. NO REFUNDS AFTER APRIL 18th.**

Name: \_\_\_\_\_ 2-DAY 2020

Mailing Address: \_\_\_\_\_

City: \_\_\_\_\_ State: \_\_\_\_\_ Zip: \_\_\_\_\_

Email: \_\_\_\_\_ #Master Points \_\_\_\_\_

Phone #: \_\_\_\_\_ Partner\*: \_\_\_\_\_

We would like to sit with \_\_\_\_\_ and \_\_\_\_\_

\*OR: Shall we assign a partner for you? \_\_\_\_\_ Do you need a St. Simons map? \_\_\_\_\_